

# School Groups Information Package 2022-23



## A LITTLE BIT ABOUT US...

Located in the heart of the magnificent Canadian Rockies, we let our legendary 4,275 skiable acres of world-class terrain speak for itself, while Mother Nature does the rest. With beginner, intermediate and expert runs from every chair, our terrain allows groups of varying abilities to ski or snowboard and share the experience together.

We offer packages that include lift tickets, lessons, equipment rentals, non-ski activities and meal options. Tell us what you're looking for and we'll create the perfect package for you and your students.

You can plan your trip from early November through until early May each year.

**We're here to help!**

## TABLE OF CONTENTS

<b>How to Book a School Trip</b>	<b>2</b>
<b>VALUE School Group Rates</b>	<b>3</b>
<b>REGULAR School Group Rates</b>	<b>4</b>
<b>What you need to know</b>	<b>5</b>
<b>General Trip Information</b>	<b>6</b>
<b>Policies &amp; Procedures</b>	<b>7</b>
<b>i: Cancellation Policy</b>	<b>8</b>
<b>ii: Payment Conditions</b>	<b>9</b>

**STUDENT  
PACKAGES  
FROM  
\$67.98**

**ADD-ON DINING &  
TRANSPORTATION**

**LESSON DURATIONS:  
1hr | 1.5hr | FULL-DAY**

**SAVE \$\$\$  
WITH OUR  
VALUE  
RATES**

**ANY QUESTIONS?  
Contact one of our  
Groups Specialists:  
403-522-1341**

403-522-1341  
groups@skilouise.com



# HOW TO BOOK A SCHOOL TRIP

## BOOKING PROCESS:

1. To qualify for these rates, all students must participate in a lesson.
2. Look through our rates and choose your products.
3. Fill out the online Group Booking Form.
4. Once a Group Sales specialist has been in contact with a you, you will receive the following:
  - i. Booking Form to secure your trip dates and payment
  - ii. Online link to share with your Group and collect information about your trip
5. Our Group Sales specialist will be in contact with you the entire way if you have any questions!

## FAST FACTS:

**Area: 4,275 skiable acres**

**Total Number of Lifts: 11**

**Runs: 164 named runs + Back Bowls**

**25% Beginner | 45% Intermediate | 30% Expert**

**There's a green, blue & black run from each lift!**

**Average Snowfall: 480cms (16ft)**

**Top Elevation: 2637m/ 8650ft**

**Vertical Rise: 991m/ 3250ft**

**Longest Run: 8 kilometers (5 miles)**

**Length of season: November to early May**



**5 MOUNTAIN  
FACES**

**TOP 2650m | 3250ft**

**8KMS  
LONGEST RUN**

**VERTICAL RISE 991m | 3250ft**

**4275  
SKIABLE  
ACRES**

**AVERAGE SNOWFALL 480cms | 16ft**

**11**   
**LIFTS**

**164  
NAMED RUNS  
+ OUR FAMOUS  
BACK  
BOWLS**

# VALUE SCHOOL GROUP RATES

Rates do not include 5% GST

**VALUE PRICING** NOT VALID: December 19, 2022 - January 1, 2023 and February 20 - April 3, 2023

## LIFT TICKET + LESSON + RENTAL EQUIPMENT

	1hr LESSON	1.5hr LESSON	FULL-DAY LESSON
<b>Grade 1 - 9</b> LIFT TICKET + LESSON + RENTAL EQUIPMENT	\$ 67.98	\$ 80.31	\$ 114.12
<b>Grade 10 - 12</b> LIFT TICKET + LESSON + RENTAL EQUIPMENT	\$ 103.08	\$ 115.41	\$ 149.22

## LIFT TICKET + LESSON

For students bringing their own equipment

	1hr LESSON	1.5hr LESSON	FULL-DAY LESSON
<b>Grade 1 - 9</b> LIFT TICKET + LESSON	\$ 47.50	\$ 59.83	\$ 93.65
<b>Grade 10 - 12</b> LIFT TICKET + LESSON	\$ 82.60	\$ 94.93	\$ 128.75

## VISITING FOR EXTRA DAYS?

### LIFT TICKET + RENTAL EQUIPMENT

Add-on lift tickets and keep rental equipment for extra days!\*

	DAY 2	DAY 3	DAY 4
<b>Grade 1 - 9</b> LIFT TICKET + RENTAL EQUIPMENT	\$ 43.29	\$ 86.58	\$ 129.87
<b>Grade 10 - 12</b> LIFT TICKET + RENTAL EQUIPMENT	\$ 78.39	\$ 156.78	\$ 235.17

\*Students MUST participate in a lesson on their first day to receive day 2+ rates.

\*Please enquire about lift ticket only rates if students have brought their own equipment.

## CHAPERONES (18 YEARS+)

Rates are priced per day. Please enquire about our lesson add-on.

	LIFT TICKET	RENTAL EQUIPMENT PACKAGE
<b>CHAPERONE</b> PER ADULT, PER DAY (18 YEARS+)	\$ 83.85	\$ 35.75



RATES SHOWN ARE PER DAY

# REGULAR SCHOOL GROUP RATES

Rates do not include 5% GST

**REGULAR PRICING** VALID: December 19, 2022 - January 1, 2023 and February 20 - April 3, 2023

## LIFT TICKET + LESSON + RENTAL EQUIPMENT

**Grade 1 - 9** LIFT TICKET + LESSON + RENTAL EQUIPMENT

**Grade 10 - 12** LIFT TICKET + LESSON + RENTAL EQUIPMENT

1hr LESSON	1.5hr LESSON	FULL-DAY LESSON
\$ 75.12	\$ 87.68	\$ 122.16
\$ 115.62	\$ 128.18	\$ 162.66

## LIFT TICKET + LESSON

For students bringing their own equipment

**Grade 1 - 9** LIFT TICKET + LESSON

**Grade 10 - 12** LIFT TICKET + LESSON

1hr LESSON	1.5hr LESSON	FULL-DAY LESSON
\$ 51.49	\$ 64.06	\$ 98.53
\$ 91.99	\$ 104.56	\$ 139.03

## VISITING FOR EXTRA DAYS?

### LIFT TICKET + RENTAL EQUIPMENT

Add-on lift tickets and keep rental equipment for extra days!\*

**Grade 1 - 9** LIFT TICKET + RENTAL EQUIPMENT

**Grade 10 - 12** LIFT TICKET + RENTAL EQUIPMENT

DAY 2	DAY 3	DAY 4
\$ 49.95	\$ 99.90	\$ 149.85
\$ 90.45	\$ 180.90	\$ 271.35

\*Students MUST participate in a lesson on their first day to receive day 2+ rates.

\*Please enquire about lift ticket only rates if students have brought their own equipment.

## CHAPERONES (18 YEARS+)

Rates are priced per day. Please enquire about our lesson add-on.

**CHAPERONE** PER ADULT, PER DAY (18 YEARS+)

LIFT TICKET	RENTAL EQUIPMENT PACKAGE
\$ 96.75	\$ 41.25



RATES SHOWN ARE PER DAY



# WHAT YOU NEED TO KNOW: LESSONS & RENTALS

## SKI AND SNOWBOARD RENTALS:

- Helmets are mandatory for all student Ski & Snowboard lessons.
- **SKI PACKAGE INCLUDES:** skis, boots, poles and helmet.
- **SNOWBOARD PACKAGE INCLUDES:** snowboard, boots and helmet.
- Please send all your students to your predetermined rental location when you get here (this information will be provided by your Group Sales specialist prior to arrival).
- Rentals are preset based on the information provided. If rentals don't fit, students should take their ill-fitting gear down to the rental shop to have adjustments made.
- Complimentary overnight storage of LLSR rental equipment is available for multi-day trips. Please enquire with your Group Sales specialist. Please advise if you require this service at the time of booking.
- Lockers are available for rent if you wish to store your personal equipment overnight.
- **RENTALS ARE SUBJECT TO AVAILABILITY.**

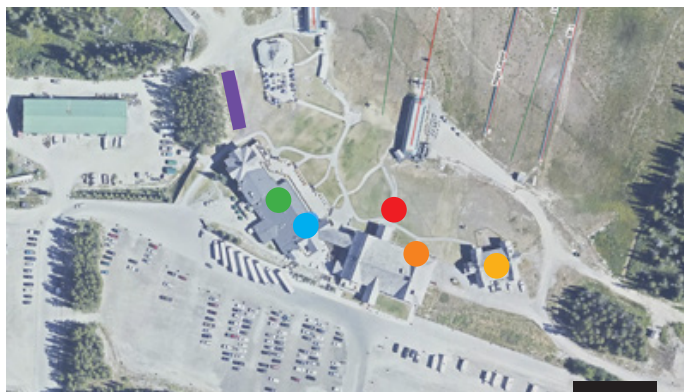


## SKI AND SNOWBOARD LESSONS:

- **ALL STUDENTS TAKING A LESSON MUST BE IN THE SAME LENGTH OF LESSON.**
- **ALL STUDENTS TAKING A LESSON MUST BE WEARING A HELMET.**
- **1hr Lessons:** 9:00am – 10:00am **OR** 9:30am – 10:30am.
- **1.5hr Lessons:** 9:00am – 10:30am **ONLY.**
- **Full Day Lessons:** 10:30am – 12:30am and 1:30pm – 3:30pm (1hr lunch break from 12:30 – 1:30pm)
- **Terrain exclusions include:** Double Blacks, Summit Lift and Terrain Parks.
- **Note:** It is not mandatory for chaperones to accompany students in lessons. However, they are welcome to join if they wish.
- **We recommend that you arrive 1hr prior to the lesson start time. We cannot guarantee a lesson extension or time adjustment if your group is late, punctuality is appreciated.**
- Meet your instructors 10 minutes before your lesson start time at the “Ski School Meeting Place” located in the base area (see map).
- Organizers should assist instructors with splitting up participants into groups according to ability level.

# GENERAL TRIP INFORMATION

Here's a guide to help make your ski day run smoothly!



SKI PATROL  
GUEST SERVICES  
GROUP SALES  
SNOW SCHOOL MEETING PLACE  
RENTAL SHOP  
DAYCARE  
BUS PARKING

## LAST MINUTE UPDATES

- If you have any last-minute changes to your group reservation please call us prior to your arrival. This will help us make necessary changes to your booking and get you on-snow sooner!

## BUS TRANSPORT AND BUS PARKING

- The bus drop off zone is located in front of the main lodge.
- Bus Parking is located at the far end of the drop off area (see BUS PARKING above).
- If you are looking for Bus Transportation, feel free to reach out to our friends at Southland Transport at [charters\\_estimate@southland.ca](mailto:charters_estimate@southland.ca) and make sure to mention you're booking your ski day with the Lake Louise Ski Resort!



## CHECKING IN UPON ARRIVAL

- When you get here, the Group Leader should visit the Group Sales Office located on the lower level of the Whiskyjack Lodge, opposite Guest Services (see above map).
- **It's the responsibility of the Group Leader to ensure that everyone receives their lift tickets, lessons and rentals.**
- Be prepared with emergency details for an on-snow leader and/or leader remaining at the base area.
- Confirmed payment.

## HUNGRY?

- Many dining options can be made available to your group including bagged lunches or cafeteria vouchers. We'll send you more information on dining options upon request!

## DAY LOCKERS

- Please reach out to your Group Sales specialist to enquire about day lockers for your bags.

# POLICIES & PROCEDURES

By signing the Group Booking Form you are agreeing to the following:

## RATE INFORMATION

- All prices are in Canadian dollars and subject to a 5% goods & services tax (subject to change).
- These prices are for groups of 8 students or more enrolled in a Snow School lesson
- One (1) complimentary Adult Lift Ticket will be provided for every ten (10) Student Packages sold.
- Ticket rates are per person, per day.

## PAYMENT PROCEDURES

- To be eligible for school group rates, only one form of payment is accepted for the full total amount.
- Payment forms accepted: Visa, MasterCard, Amex, Debit, Cash, Certified Cheques, and Invoice (Invoice must be set up in advance of your ski day via approved credit application).
- We require a credit application to be completed and approved for groups of 100 people or more.
- Prior to receiving lift tickets, rental equipment or lessons, payment must be made in full.
- Amendments and changes must be reported to your Group Sales Coordinators by 2pm on your final ski day.
- Credit Cards are held on file, until the point of the sale (please see cancellation policy).
- Certified cheques are payable to **The Lake Louise Ski Area Ltd.**

## RENTAL PROCEDURES

- Groups of 8 or more people ordering rental equipment will have their rentals pre-set.
- Rental information must be submitted 2 weeks prior to your ski day - **we cannot guarantee pre-set rentals if the information is late.**





# POLICIES & PROCEDURES

By signing the Group Booking Form you are agreeing to the following:

## CANCELLATION POLICY

### Groups:

- Please contact your Group Sales specialist as soon as possible when cancelling your group.

### Lessons and Rentals:

- Cancellations made within 48hrs of arrival not involving force majeure will be charged of 100% of the pre-booked rentals and lessons.

### Food and Beverage:

- Final numbers OR cancellation must be confirmed 96 hours (4 days) prior to your group's arrival.
- Cancellation within 72 hours (3 days) of the arrival date will be charged 50%.
- Cancellation within 48 hours (2 days) of the arrival date will be charged 100%.
- Billing will be based on the guaranteed number or actual number, whichever is greater.

### COVID-19:

- Operations at The Lake Louise Ski Resort & Summer Gondola are subject to, and, may be affected by changes to Alberta Health regulations with very little notice. We will endeavour to provide as much advance notice of any changes to your booking resulting from any of the above regulation changes or modifications.



# POLICIES & PROCEDURES

By signing the Group Booking Form you are agreeing to the following:

## PAYMENT CONDITIONS

The Lake Louise Ski Area Ltd agrees to sell products for the 2022-23 ski season to the partner, subject to the terms and conditions that follow:

1. Definitions: For the Agreement the following definitions apply.
  - a) "Lake Louise Ski Area Ltd" means those services defined in this document.
2. Term: This agreement affects The Lake Louise Ski Area Ltd services provided between the openings and closing dates of skiing operation at the Lake Louise Ski Resort for the 2022-23 ski season. The agreement extends for whatever period required to fulfill all of the terms and conditions and until the partner has paid all indebtedness to The Lake Louise Ski Area Ltd, including principal and interest.
3. This agreement applies to Lake Louise Ski Area Ltd services for the 2022-2023 ski season only.
4. The Lake Louise Ski Area Ltd must approve the partner's credit privileges annually. Should the partner be granted credit privileges, The Lake Louise Ski Area Ltd will accept vouchers from the partner provided that, The Lake Louise Ski Area Ltd has approved the partner's computer-generated vouchers or otherwise in writing. Vouchers will not be accepted in redemption for services until approved.
5. Should the partner not wish to apply for, or use credit privileges, services will be paid for at the time of arrival.
6. Should the partner be granted credit privileges, the partner will be invoiced on a weekly basis for services provided.
7. The partner will pay invoices upon receipt.
8. All amounts owed by the partner for a period of over 20 days from the date of invoice will be subject to interest charges of 1.5 % per month.
9. The Lake Louise Ski Area Ltd may, at its discretion, refuse to provide the partner services if the partner has not fulfilled any element of this agreement.
10. Confirmation of your acceptance of these terms may be given by electronic means and you agree that the agreement formed by your acceptance of these terms shall be governed by the laws of Alberta and the laws of Canada applicable therein and any dispute arising out of or relating to such agreement shall be determined exclusively by the courts of Alberta.